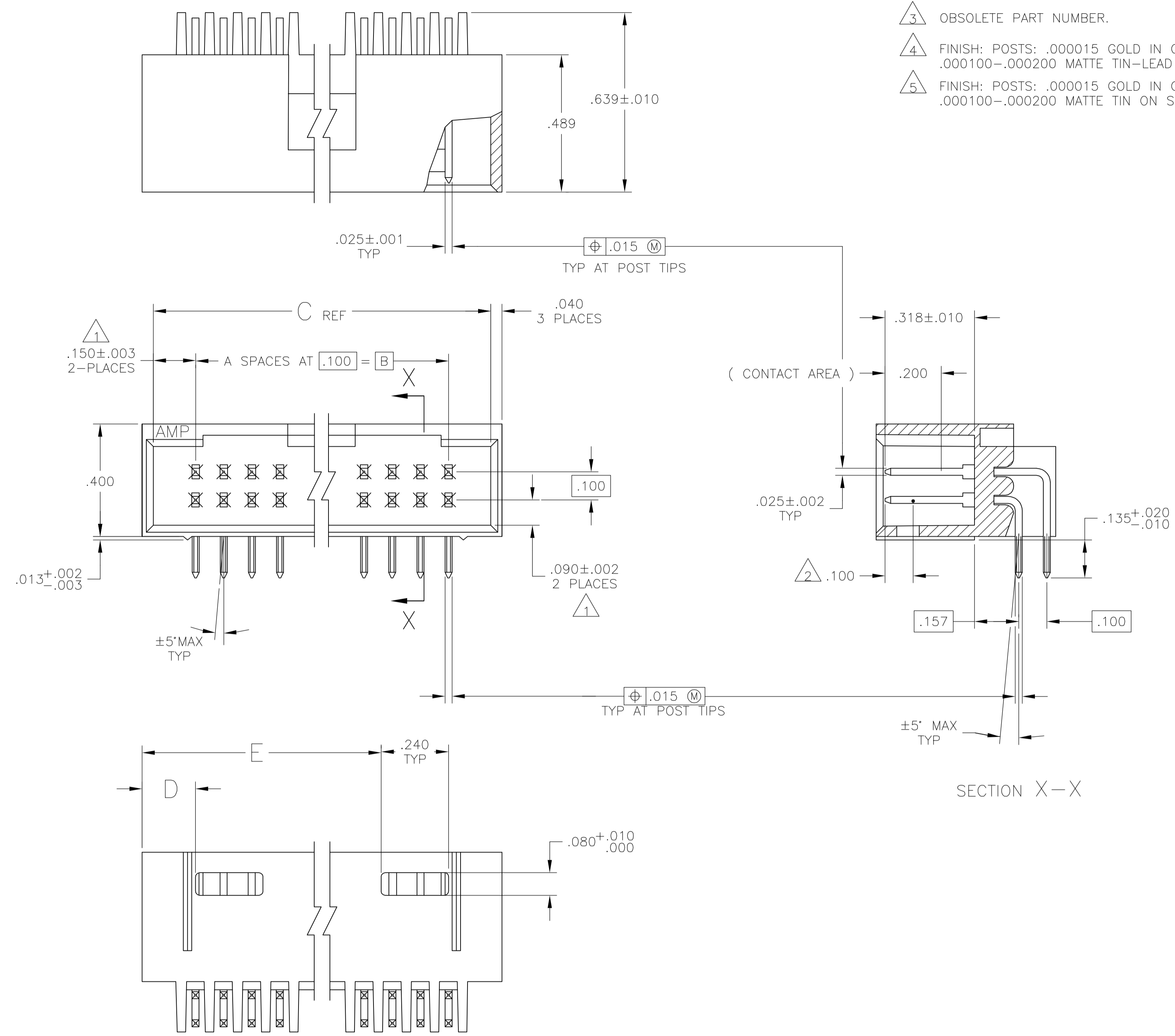
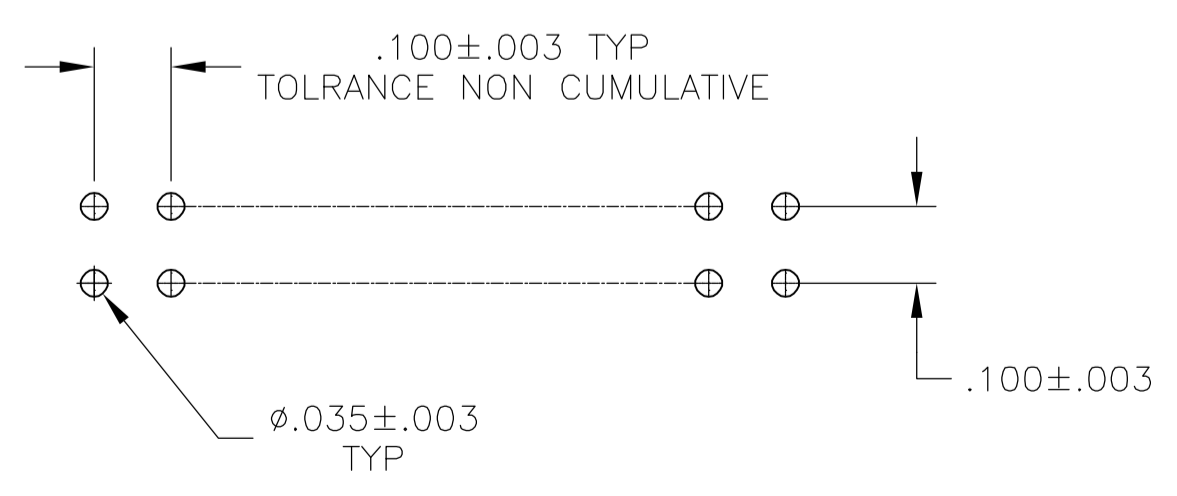


- 1 THE NOTED DIMENSIONS APPLY AT THE INTERSECTION OF THE POST AND HOUSING.
- 2 POINT OF MEASUREMENT FOR PLATING THICKNESS.
- 3 OBSOLETE PART NUMBER.
- 4 FINISH: POSTS: .000015 GOLD IN CONTACT AREA, .000100-.000200 MATTE TIN-LEAD ON SOLDER TAIL, ALL OVER .000050 NICKEL.
- 5 FINISH: POSTS: .000015 GOLD IN CONTACT AREA, .000100-.000200 MATTE TIN ON SOLDER TAIL ALL OVER .000050 NICKEL.



REV	DATE	BY	APP	DESCRIPTION	NO OF POSN	ASSEMBLY PART NUMBER
1	8-102570-3				72	8-102570-3
2	8-102570-2				70	8-102570-2
3	8-102570-1				68	8-102570-1
4	8-102570-0				66	8-102570-0
5	7-102570-9				64	7-102570-9
6	7-102570-8				62	7-102570-8
7	7-102570-7				60	7-102570-7
8	7-102570-6				58	7-102570-6
9	7-102570-5				56	7-102570-5
10	7-102570-4				54	7-102570-4
11	7-102570-3				52	7-102570-3
12	7-102570-2				50	7-102570-2
13	7-102570-1				48	7-102570-1
14	7-102570-0				46	7-102570-0
15	6-102570-9				44	6-102570-9
16	6-102570-8				42	6-102570-8
17	6-102570-7				38	6-102570-7
18	6-102570-6				36	6-102570-6
19	6-102570-5				34	6-102570-5
20	6-102570-4				32	6-102570-4
21	6-102570-3				30	6-102570-3
22	6-102570-2				28	6-102570-2
23	6-102570-1				26	6-102570-1
24	6-102570-0				24	6-102570-0
25	5-102570-9				22	5-102570-9
26	5-102570-8				20	5-102570-8
27	5-102570-7				18	5-102570-7
28	5-102570-6				16	5-102570-6
29	5-102570-5				14	5-102570-5
30	5-102570-4				12	5-102570-4
31	5-102570-3				10	5-102570-3
32	5-102570-2				8	5-102570-2
33	5-102570-1				8	5-102570-1
34	5-102570-0				8	5-102570-0
35	3-102570-3				40	3-102570-3
36	3-102570-2				40	3-102570-2
37	3-102570-1				40	3-102570-1
38	3-102570-0				40	3-102570-0
39	2-102570-9				40	2-102570-9
40	2-102570-8				40	2-102570-8
41	2-102570-7				40	2-102570-7
42	2-102570-6				40	2-102570-6
43	2-102570-5				40	2-102570-5
44	2-102570-4				40	2-102570-4
45	2-102570-3				40	2-102570-3
46	2-102570-2				40	2-102570-2
47	2-102570-1				40	2-102570-1
48	2-102570-0				40	2-102570-0
49	1-102570-9				40	1-102570-9
50	1-102570-8				40	1-102570-8
51	1-102570-7				40	1-102570-7
52	1-102570-6				40	1-102570-6
53	1-102570-5				40	1-102570-5
54	1-102570-4				40	1-102570-4
55	1-102570-3				40	1-102570-3
56	1-102570-2				40	1-102570-2
57	1-102570-1				40	1-102570-1
58	1-102570-0				40	1-102570-0
59	102570-9				40	102570-9
60	102570-8				40	102570-8
61	102570-7				40	102570-7
62	102570-6				40	102570-6
63	102570-5				40	102570-5
64	102570-4				40	102570-4
65	102570-3				40	102570-3
66	102570-2				40	102570-2
67	102570-1				40	102570-1



THIS DRAWING IS A CONTROLLED DOCUMENT.

DIN	H MOLL	25-8-87	Tyco Electronics Corporation Harrisburg, Pa 17105-3608			
CHK	A MAYER	21-8-87				
APPROV	R FEIDT	21-8-87	NAME HDR ASSY, MOD II, SHROUDED, .100X.100 C/L 4 SIDES, DBL ROW, RIGHT ANGLE, W/ .025 SQ POSTS			
PRODUCT SPEC						
APPLICATION SPEC			SIZE	CAGE CODE	DRAWING NO	RESTRICTED TO
			A1	00779	102570	
MATERIAL	FINISH	WEIGHT	CUSTOMER DRAWING		SCALE	SHEET
SEE TABLE	SEE TABLE				4:1	1 OF 1